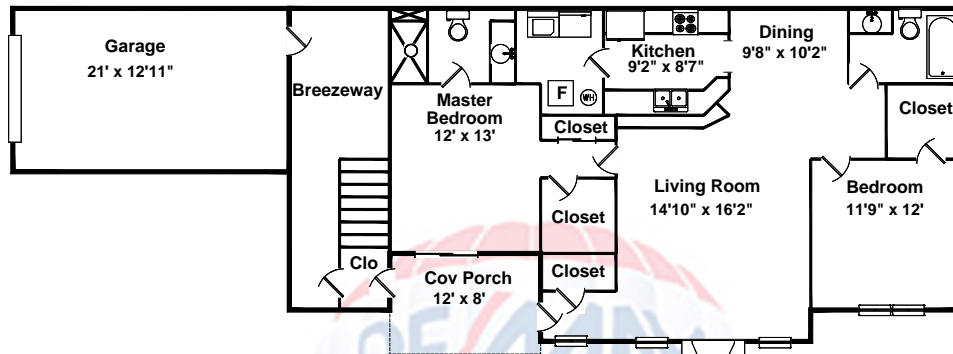


701 N. prairieview Rd. #2
Mahomet, IL



Area Sizes:

1st Floor: 1092 sq.ft.
Garage: 286 sq.ft.
Porch: 96 sq.ft.
Breezeway: 192 sq.ft.

Property was measured to Champaign standards
Information Deemed Reliable and is for Illustration Purposes Only
Copyright 2006 HomeSight-All Rights Reserved
Interior Room Measurements are Approximate

homesight, inc.

APEX SOFTWARE 800-858-9958

Apix2000-w Apex2

701 N. Prairieview Rd. #2 Mahomet IL 61853



RE/MAX Realty Associates

Nick Taylor

Office: 217-586-4906

Mobile: 217-377-4353

Email: jessicab@taylor-realty.com

Web: <http://www.taylor-realty.com>



Information Deemed Reliable But Not Guaranteed and is for Illustration Purposes Only - All Interior Dimensions Are Approximate
Copyright 2014 HomeSight, Inc. - All Rights Reserved

RSS: 3968